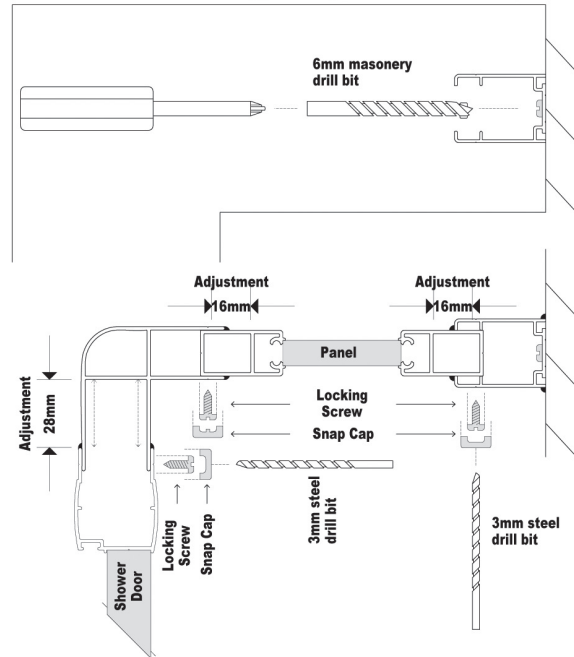
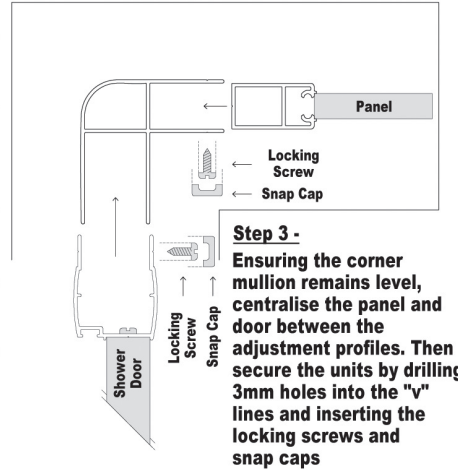


## STANDARD RETURN PANEL

**Step 1 -** Remove the extension profile from the proposed panel side of the shower, position, drill and secure it to the wall



**Step 2 -** Slide the corner mullion into the jamb of the shower and over the side stile of the panel



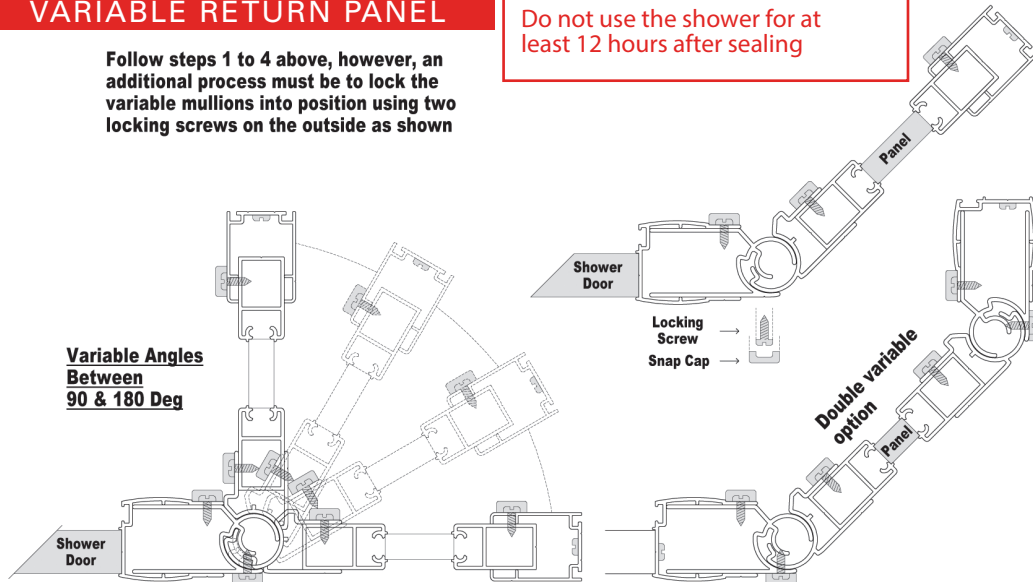
**Step 3 -** Ensuring the corner mullion remains level, centralise the panel and door between the adjustment profiles. Then secure the units by drilling 3mm holes into the "v" lines and inserting the locking screws and snap caps

**Step 4 -** Seal outside and inside the bottom rail and adjustment profiles, using a clear anti-mould silicone sealer

## VARIABLE RETURN PANEL

Follow steps 1 to 4 above, however, an additional process must be to lock the variable mullions into position using two locking screws on the outside as shown

Do not use the shower for at least 12 hours after sealing



Should any of these instructions be unclear please contact Origin Aluminium for assistance or visit [www.origingroup.co.za](http://www.origingroup.co.za)

**Oa**  
**Origin**  
aluminium

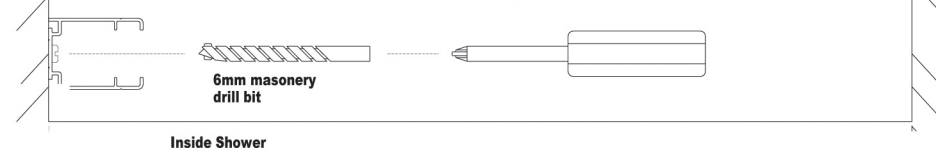
## ORIGIN SHOWER INSTALLATION INSTRUCTIONS

[www.origingroup.co.za](http://www.origingroup.co.za)

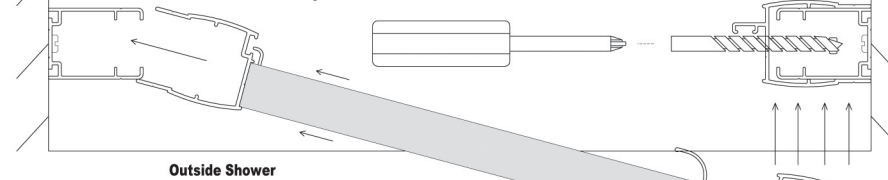
### PIVOT SHOWER DOOR

This unit may be fitted as left or right hand opening out as desired by rotating top to bottom

**Step 1 -** After ensuring the base is level, drill and secure the extension profile from the non-handle side to the wall taking care it is centralised and level

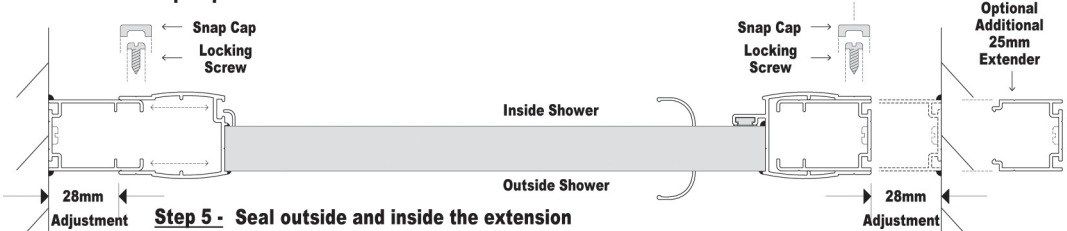


**Step 2 -** Slide the jamb (on the non-handle side) over the extension profile



**Step 3 -** Position the other side of the door equidistant from the edge of the plinth, drill through the extension profile using the pre-drilled holes in the jamb as a guide and fix to the wall. Insert the plastic grommets into the jamb holes

**Step 4 -** Centralise the door between the two extension profiles and drill 2 x 3mm holes in each of the sides on the inside along the "v" lines. Use the locking screws provided to secure the unit and clip the snap caps onto the heads of the screws



**Step 5 -** Seal outside and inside the extension profiles, along the bottom of the sill rail and where the head and sill rails meet the jambs, using a clear anti-mould silicone sealer

Do not use the shower for at least 12 hours after sealing

## TRI SHOWER DOOR



This unit may be fitted as left or right hand sliding as desired by rotating top to bottom

**Step 1 -** After ensuring the base is level, drill and secure the extension profile from the non-handle side to the wall taking care it is centralised and level

6mm masonry drill bit

Inside Shower

**Step 2 -** Slide the jamb (on the non-handle side) over the extension profile

Outside Shower

**Step 3 -** Position the other side of the door equidistant from the edge of the plinth, drill through the extension profile using the pre-drilled holes in the jamb as a guide and fix to the wall. Insert the plastic grommets into the jamb holes

**Step 4 -** Centralise the door between the two extension profiles and drill 2 x 3mm holes in each of the sides on the inside along the "v" lines. Use the locking screws provided to secure the unit and clip the snap caps onto the heads of the screws

3mm steel drill bit

Inside Shower

Outside Shower

Optional Additional 25mm Extender

Adjustment

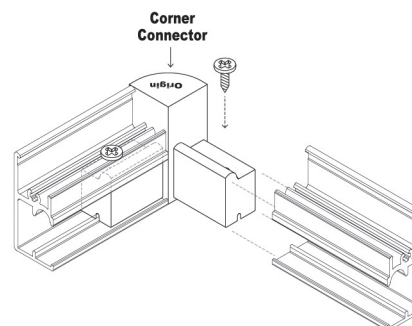
Adjustment

**Step 5 -** Seal outside and inside the extension profiles, along the bottom of the sill rail and where the head and sill rails meet the jambs, using a clear anti-mould silicone sealer

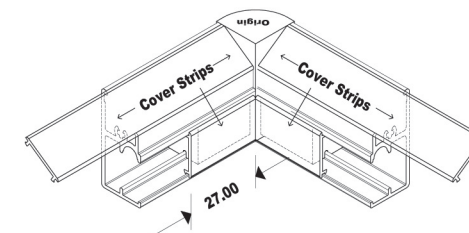
Do not use the shower for at least 12 hours after sealing

## CORNER ENTRY SHOWER DOOR

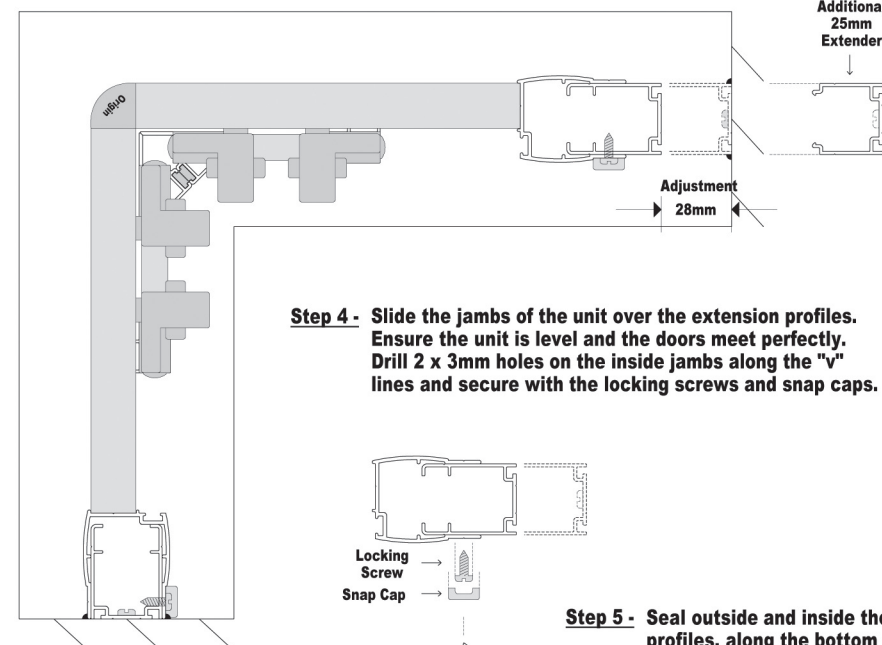
**Step 1 -** Slide the head and sill rails over the free leg of the corner connectors and screw into position, forming the corner unit



**Step 2 -** Clip the cover strips onto the head and sill rails, copying the positions on the assembled side



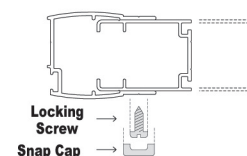
**Step 3 -** Position the complete corner unit centralised in place. Ensuring the wall stiles are level, mark the positions, drill and secure the extension profiles in place



Optional Additional 25mm Extender

Adjustment  
28mm

**Step 4 -** Slide the jambs of the unit over the extension profiles. Ensure the unit is level and the doors meet perfectly. Drill 2 x 3mm holes on the inside jambs along the "v" lines and secure with the locking screws and snap caps.



Locking Screw  
Snap Cap

**Step 5 -** Seal outside and inside the extension profiles, along the bottom of the sill rail and where the head and sill rails meet the jambs, using a clear anti-mould silicone sealer

Do not use the shower for at least 12 hours after sealing